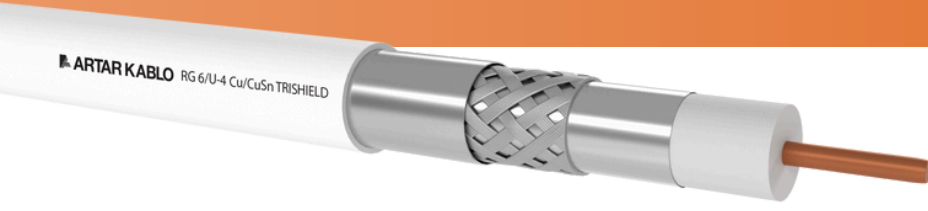


RG 6/U-4 CU/CUSN TRISHIELD

KOAKSİYEL KABLolar COAXIAL CABLES



KULLANIM ALANLARI

- Bina içi CATV, CCTV sistemlerinde dağıtım kablosu ve düşük zayıflama istenen uydu sistemlerinde bağlantı kablosu olarak kullanılır.

APPLICATION

- It is used as a distribution cable for Indoor CATV, CCTV systems and as a connection cable for satellite systems where lower attenuation is required.

KABLO YAPISI

- İletken:** 1,02 mm Ø Elektrolitik Bakır
- Yalıtkan:** 4,60 mm Fiziksel Köpük PE
- 1. Ekran:** Al-Pes Bant (100% Kapama)
- 2. Ekran:** Kalaylı Bakır Örgü
- 3. Ekran:** Al-Pes Bant (100% Kapama)
- Kılıf:** 7mm Ø PVC Kompaund Beyaz
- Toplam Ağırlık:** 49kg/km
- Standart Uzunluk:** 100/500/1000/2000 m

CABLE STRUCTURE

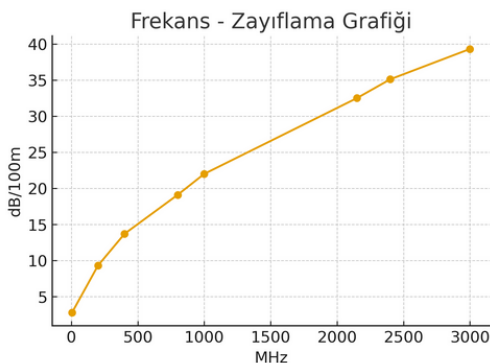
- Conductor:** 1.02 mm Ø Electrolytic Copper
- Insulation:** 4,60mm Physical Foam PE
- 1st Screen:** Al-Pes Tape (100% Coverage)
- 2nd Screen:** Alumintum Braid
- 3rd Screen:** Al-Pes Tape (100% Coverage)
- Sheath:** 7mm Ø PVC Compound White
- Total Weight:** 49kg/km
- Standard Length:** 100/500/1000/2000 m

TEKNİK ÖZELLİKLERİ

TECHNICAL CHARACTERISTIC

YALITIM DİRENCİ	EFEKTİF KAPASİTE	YAYILMA HIZI	ÇALIŞMA VOLTAJİ	TEST VOLTAJİ	BÜKÜLME YARIÇAPI	ÇALIŞMA SICAKLIĞI	EMPEDANS	ALEV GECİKTİRİCİLİK TESTİ
>2000MΩxkm	53±2 pF/mt	82%	1,3 kV	3 kV	20x Cable Ø	-40°C+70°C	75±3 Ω	IEC 60332-1-2 DIN EN 60332-1-2 EN 60332-1-2

ELEKTRİKSEL ÖZELLİKLER ELECTRICAL CHARACTERISTICS



ZAYIFLAMALAR (20°C) ATTENUATIONS (20°C)

MHz	5	200	400	800	1000	2150	2400	3000
dB/ 100m	2,8	9,3	13,7	19,1	22	32,5	35,1	39,3